



# Ridge Creek Fire



Idaho Panhandle National Forests, Coeur d'Alene River  
Ranger District  
Fire Information 208-953-7022  
Media Information 989-292-9373  
[2023.ridgecreek@firenet.gov](mailto:2023.ridgecreek@firenet.gov)  
<https://inciweb.nwcg.gov/incident-information/idipf-ridge-creek>

**August 19, 2023**

---

**Location:** Approximately 3.5 miles east of the north tip of Hayden Lake, along the Hayden Creek Road (FSR 437) from the Ridge Creek drainage to South Chilco Mountain.

**Start Date:** 8/3/2023    **Cause:** Human/Under Investigation    **Size:** 4,020 acres    **Containment:** 12%  
**Total Personnel:** 521    **Engines:** 20    **Heavy Equipment:** 6    **Crews:** 12

A community meeting for the public is planned for 3:00 PM this Sunday afternoon, August 20, at the Athol Community Center, 30355 3rd St., Athol, ID 83801. The meeting will be live-streamed on the Idaho Panhandle NF Facebook Page: <https://www.facebook.com/USFSIPNF/>

Structure protection staff will be placing water-handling equipment in the Bunco and Trapper Creek areas as a precautionary measure.

The Kootenai County Office of Emergency Management has issued a notice for residents in the Bunco area, changing their Ready, Set, Go Status to 'Set'. A revised *Ready, Set, Go* map is enclosed with this update.

Weather will moderate today, giving fire crews and aviation resources greater opportunity to engage the Ridge Creek Fire.

## FIRE STATUS

Despite challenging conditions over the last few days, crews were able to hold and strengthen firelines on the Ridge Creek Fire, particularly along the southern and western flanks of the fire. As anticipated, with strong southwest winds, the fire moved to the northeast resulting in the increased acreage reported today. The size of the fire is currently estimated at 4,020 acres and 12% containment, which is reflected on the enclosed maps. Crews will continue to hold and strengthen existing containment lines on the western, southern, and eastern perimeters. Crews will continue to use firing operations, particularly at night, to improve and widen containment lines by burning away shrub and surface layer fuels.

With diminished winds today, as compared to yesterday, conditions for the use of aircraft will be improved. As visibility improves, aircraft will be observable, particularly over the northeast area of the fire. Aviation assets continue to be prioritized regionally and nationally based on values at risk.

A night shift of engines will continue to be used to patrol west, south, and east perimeters to monitor fire behavior.

Smoke from the Ridge Creek Fire, and smoke from fires to the west and north of the Hayden Lake area, including fires in Canada, will likely remain visible into the afternoon.

## WEATHER AND FIRE BEHAVIOR

Weather will moderate noticeably today. This should serve to moderate fire behavior. Temperatures will approach 80 degrees; minimum relative humidity will remain low, varying between 16-20%. Overnight humidity recovery will be poor, reaching approximately 36%. Low relative humidity with moderate winds and temperature may still produce active fire behavior in portions of the fire and smoke is likely to be visible. Air quality information is available at [www.airnow.gov](http://www.airnow.gov) and [www.wildlandfiresmoke.net](http://www.wildlandfiresmoke.net).

Winds will be light at 8 mph, gusting to approximately 18 mph. Winds will shift and flow out of the northeast, which will tend to move the fire back into its existing footprint where extensive efforts have been made to strengthen containment lines.

## EVACUATION STATUS

The Kootenai County Office of Emergency Management has issued an alert to inform residents of the identification of **READY, SET, GO** areas in the vicinity of the Bunco Road and Hayden Lake. Status for residents in the Bunco Road area has been change to '**SET**' and the '**READY**' area has been expanded. In '**SET**' status, residents are directed to be prepared for an evacuation if notified.

The Kootenai Office of Emergency Management provides the following direction for residents in areas designated with a **SET** status: "you are alert to the Ridge Creek Fire in your area, that you are packed to leave and prepared to leave at a moment's notice if you must evacuate. If you have livestock or special circumstances you have begun to take the necessary steps to address these concerns and made arrangements to relocate livestock if necessary."

A map of the revised **READY, SET, GO** areas is included with this update. All residents should be familiar with evacuation procedures and consistently adhere to good fire prevention measures. More information is available at [www.kcsheriff.com/186/Emergency-Management](http://www.kcsheriff.com/186/Emergency-Management)."

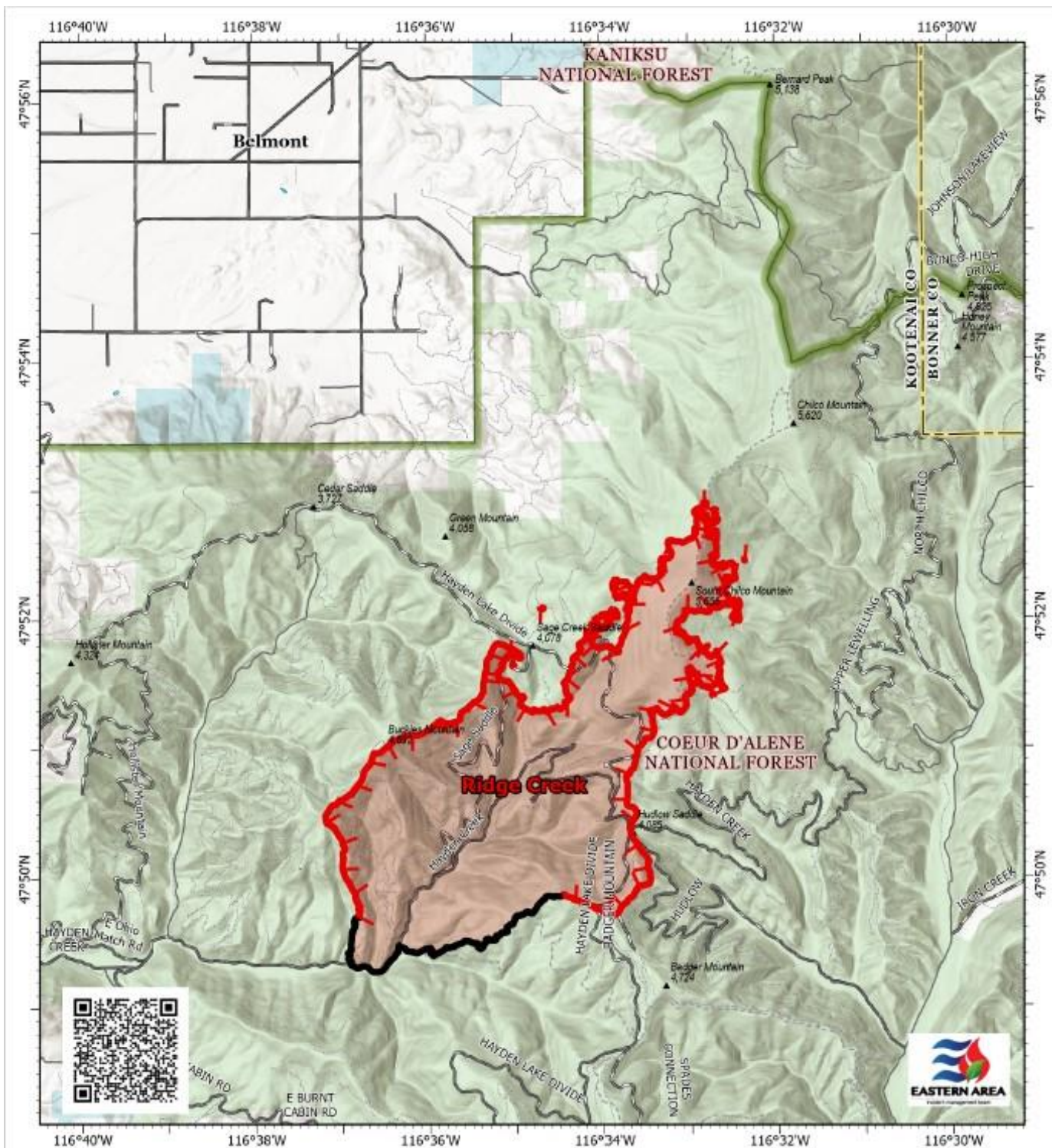
## CLOSURES AND SPECIAL MESSAGES

There is a 24-hour per day Temporary Flight Restriction (TFR) in place for the Ridge Creek Fire to prevent incursion of civilian aircraft into the area used by fire-fighting aircraft. This restriction also applies to the use of drones in the TFR area.

Firefighting aircraft are shared resources among numerous fires within the region, including the Ridge Creek Fire. These aircraft will continue to use area waterways, including Hayden Lake, for fire suppression efforts. This means that residents and recreational boaters are likely to see either helicopters or fixed-wing aircraft using the lake. For planes in particular, this requires a long, linear approach and exit from the lake. This restricts their ability to maneuver abruptly should watercraft be within their flight path, creating a serious safety hazard for both boaters and pilots. **The Ridge Creek Fire has a substantial fleet of aircraft available to support ground operations. Expect to see both fixed-wing aircraft and helicopters working, particularly on the northeast area of the fire. Again, if you are a recreational boater and you observe aircraft using either Lake Hayden or Lake Pend Oreille, you should restrict your activities to the shore area of the lakes.**

The Coeur d' Alene Dispatch Zone has issued Stage II Fire Restrictions for the Idaho panhandle. All of Kootenai County is within the Stage II Fire Restrictions area. See the flyer included with this update.

The Idaho Panhandle National Forests issued an emergency closure (Closure Order #01-04-03-23-002) effective August 4, 2023. This Order is for public and firefighter safety due to heavy fire traffic on the area impacted on the Coeur d'Alene River Ranger District, and prohibits all methods of travel (foot, mechanized, motorized and stock) on Forest Service Roads 392, 428A, 437, 1511, 1530, 1552, 1587 and Forest Service Roads 206 and 406 north of their junction, Forest Service Trails 69, 78, 234, and 802 as well as within the described area.



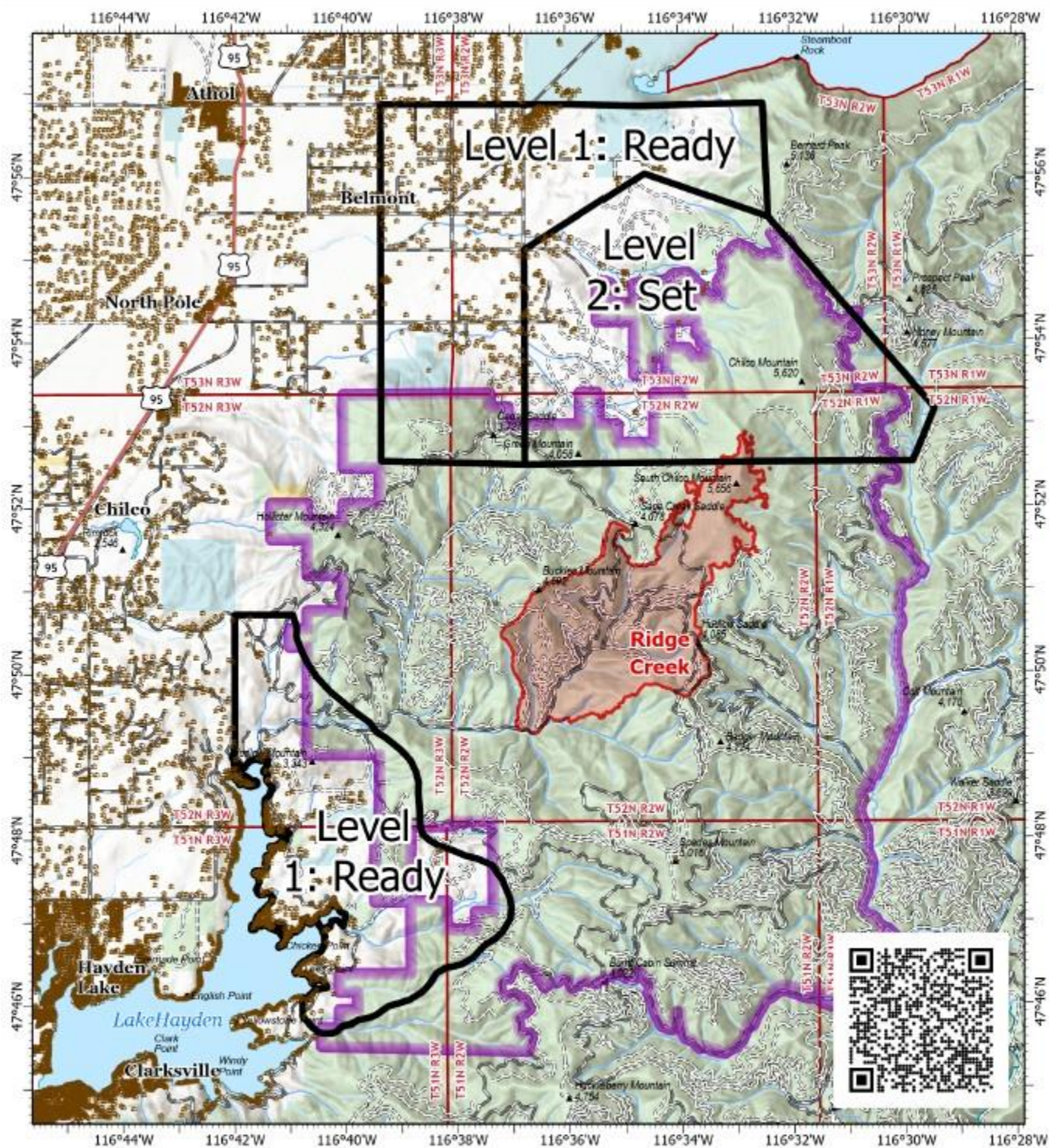
**PIO**  
**RIDGE CREEK**  
**IDIPF000447**  
**08/19/2023 Day**  
 4,020 acres at 8/18/2023 2303 hrs  
 Acres from IR  
 North American 1983 Datum  
 Lat/Long Grid

0 0.5 1  
 Miles

- |                               |                 |                 |
|-------------------------------|-----------------|-----------------|
| Wildfire Daily Fire Perimeter | State           | Unimproved Road |
| State                         | County          | Improved Road   |
| US Forest Service (USFS)      | National Forest |                 |







**PIO**  
Ready, Set, Go and Closures

**RIDGE CREEK**  
IDIPF000447  
08/19/2023 Day

4,020 acres at 8/18/2023 2303 hrs  
Acres from IR

North American 1983 Datum, Lat/Long Grid



Readiness Level Area



Wildfire Daily Fire Perimeter



Closure Areas

**Land Management**

BLM

State

USFS

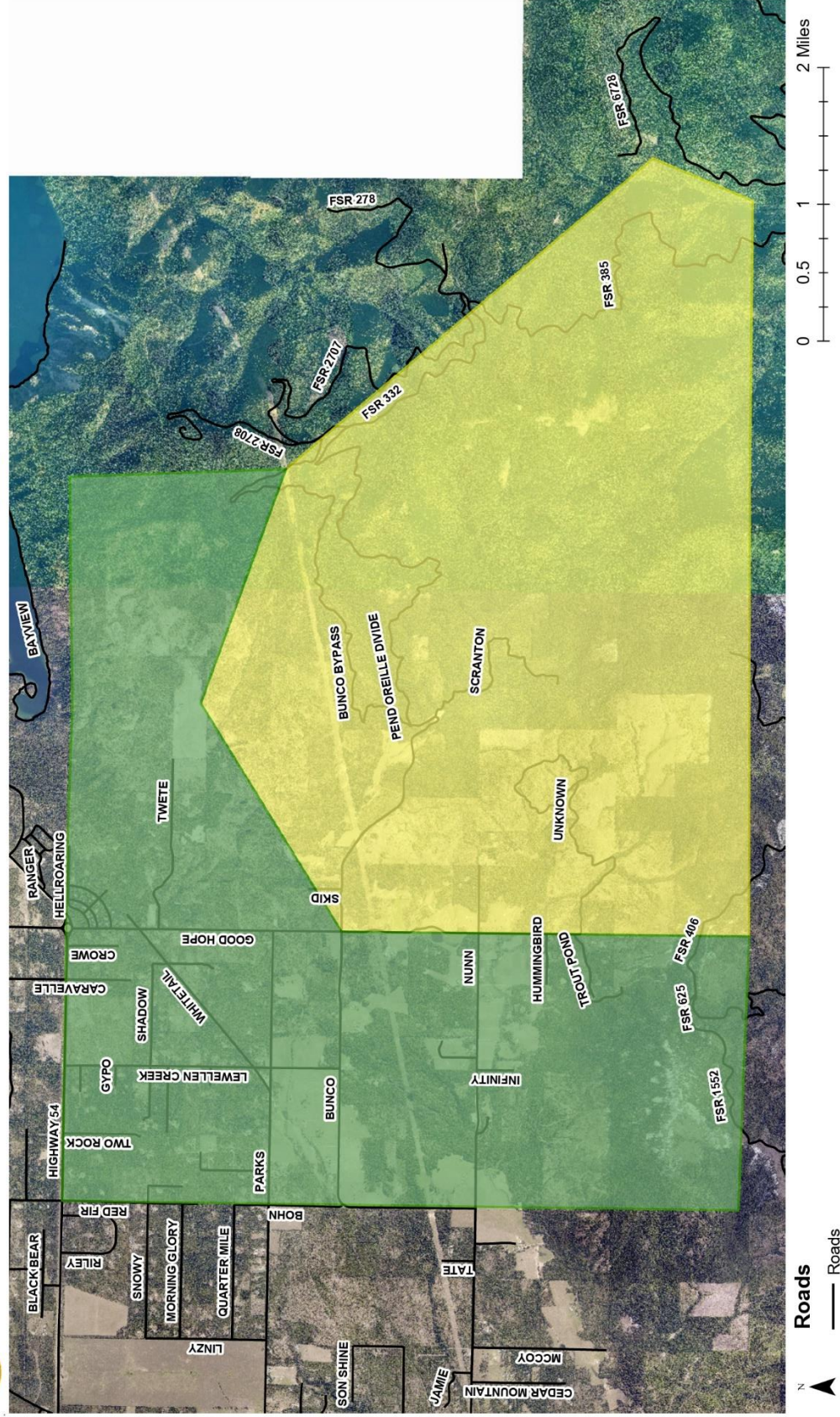
0 0.75 1.5 3 Miles







- Level 1: Get Ready
- Level 2: Get Set



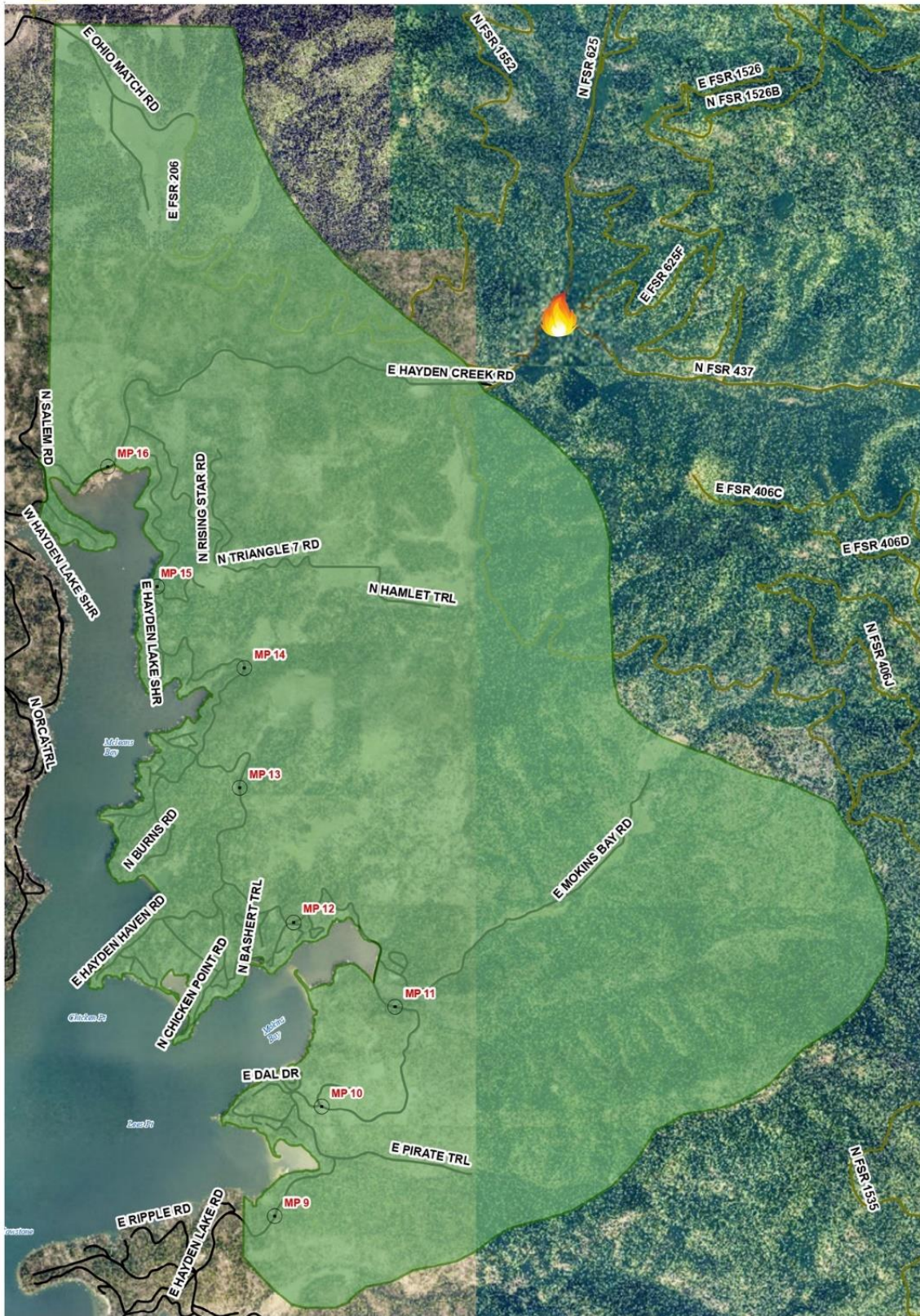




# Ridge Creek Fire

Level 1: Get Ready

Kootenai County  
August 4th, 2023



● Mile Markers  
— LOCAL ROAD  
— SEASONAL ROAD

0 0.25 0.5 1 Miles





## Idaho Panhandle National Forests



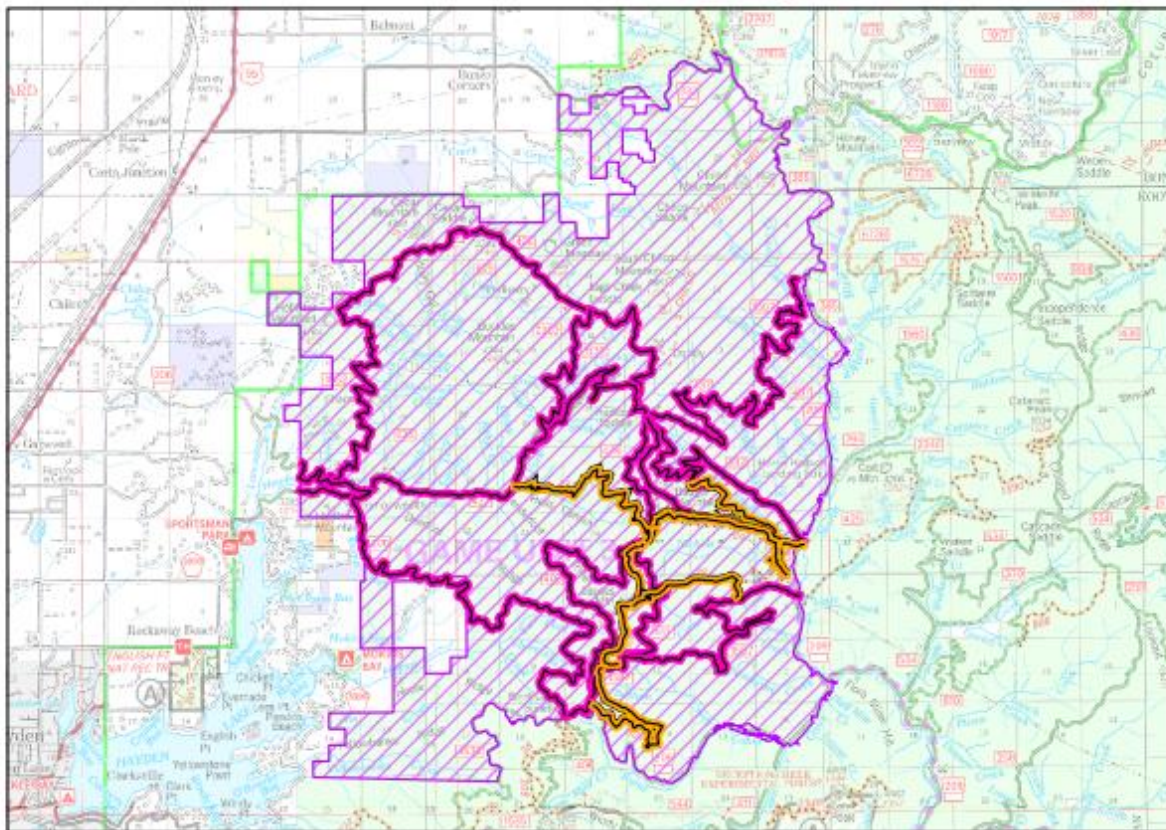
Forest Closure: Ridge Creek Fire Closure

Order Number: 01-04-03-23-002

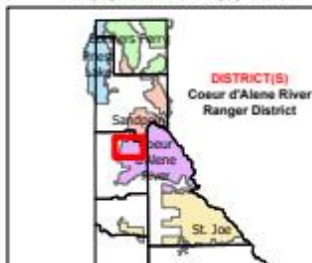
Effective Date : AUGUST 4th, 2023

Rescind Date : SEPTEMBER 30th, 2023

### Exhibit A



#### IDAHO KOOTENAI COUNTY



#### Closed Road Numbers:

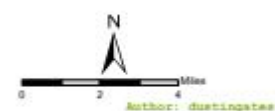
-206  
-392  
-406  
-428A  
-437  
-1511  
-1530  
-1552  
-1587

#### Closed Trail Numbers:

-69  
-78  
-234  
-802

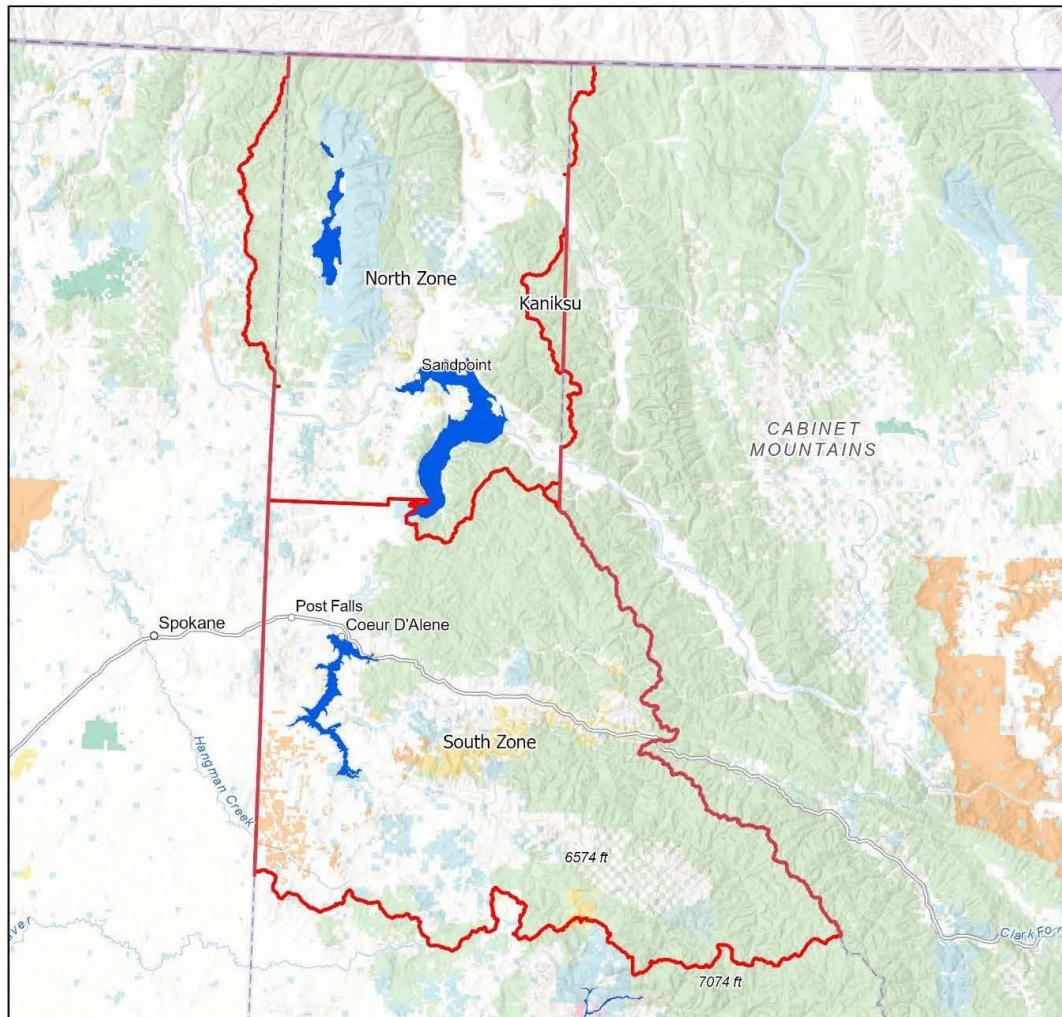
#### Closures

- Road
- Trail
- Area



# Coeur d'Alene

## Fire Restriction Areas



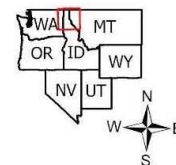
Date Created:  
05/18/2022

The surface management status should be used as a general guide only. Official lands records at the Bureau of Land Management (BLM) and other State and County offices should be checked for up-to-date information regarding any specific tract of lands.

No warranty is made by the Idaho Department of Lands (IDL) as to the accuracy, reliability, or completeness of these datasets for individual use or aggregation with other datasets.

Spatial Reference  
Name: WGS 1984 Web Mercator Auxiliary Sphere

0 5 10 20 30 40 Miles





# FIRE RESTRICTIONS



STAGE II RESTRICTIONS are in effect and **prohibit** the following:



## FIRES OR CHARCOAL

**Prohibited:** Building, maintaining, attending or using a fire, campfire, or stove fire.

**Exceptions:** Persons using a fire or stove fire fueled solely by liquid petroleum or LPG fuels. Such devices, including propane campfires, may be used only in an area **clear of flammable material**.



## SMOKING

**Prohibited:** Smoking outside an enclosed vehicle or building.

**Exceptions:** You can smoke while stopped in an area at least 3 feet in diameter that is barren or **cleared of all flammable materials**.



## Cross Country Travel

**Prohibited:** Operating motorized vehicles off designated roads and trails.



## Chainsaws/Other Equipment

**Prohibited:** The following acts are prohibited from 1:00 p.m. to 1:00 a.m. - Operating a chainsaw or other equipment powered by an internal combustion engine; blasting, welding, or other activities that generate flame or flammable material; or using an explosive.

**Remember – Fireworks are illegal on federal public lands.**



For more information contact your local fire agency